

# Linutop OS for PC

Operating System For PC & Linutop PC  
V14.04



Firefox



Libre Office



VLC player



LinutopKiosk



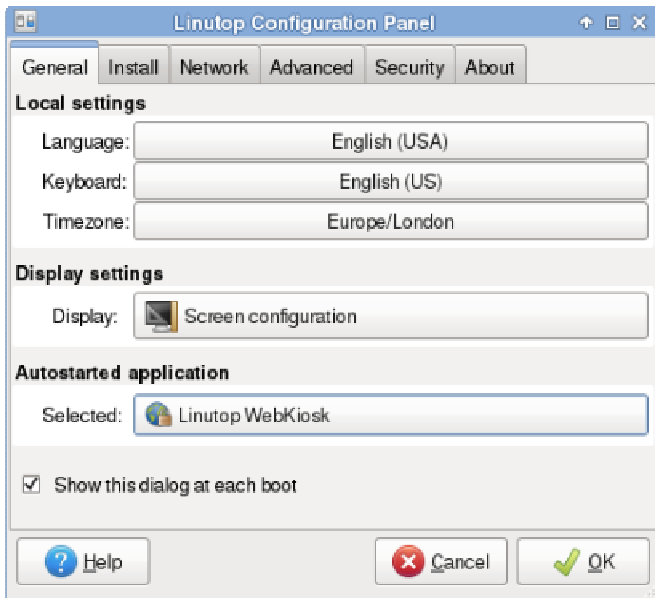
Ubuntu

## Energy Efficient Computing

Maintenance Free System for Public Internet Access,  
Digital signage, Telecom, and many other uses.

## Linutop Setup Menu

Linutop > Configuration Panel



Linutop can be configured to start automatically after reboot:  
**Multimedia Files** - audio, video or play lists, slideshows, Linutop Kiosk or any added software.  
**Linutop Kiosk** has a separated configuration menu.

At each start you can have your Linutop:

- Display a Web page,
- Play music or video stream or file,
- Start Linutop Kiosk for Digital Signage.

Or you can start automatically a specific application.  
Once validated all changes will take effect at the next reboot.

## Linutop OS is optimized for PC

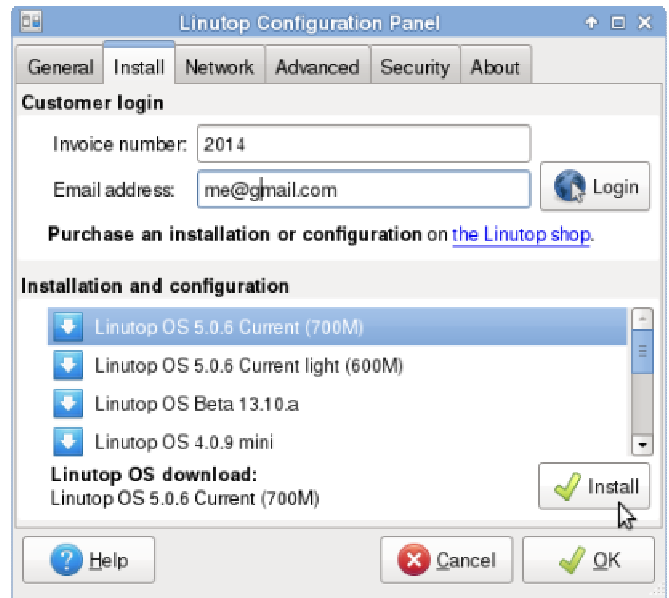


## Specifications

- **Linutop's Pre-Installed Applications**  
Linutop's Kiosk Software, Linutop Configuration Panel, Firefox 32, Libre Office 4, VLC Media Player 2, Xfce 4.1 PDF Viewer, Text editor, On screen keyboard, Picture viewer, File manager, Network manager, VPN, Kernel 3.13.11
- **Size** - approximately 750Mb - Installable on USB key or Hard Drive
- **Supported Formats** - Documents: DOC, DOCX, XLS, XLSX, PPT, PPTX, PDF, RAR, ZIP ... Multimedia: MP3, MP4, DIVX, MKV, AVI, FLV, MOV ...
- **BOOTING on an external USB Key** - Linutop can boot on other PCs It should boot automatically on USB key if not:
  - 1 insert the USB key
  - 2 Power On and enter **BIOS settings** (Del or F2 key...)
  - 3 Go to Boot menu and Select Hard Disk Drives
  - 4 As a First Boot Drive Select USB: Generic Flash Disk
  - 5 Press F10 to save
- **Compatibility**  
Hard Drive, USB key, Flash memory  
Minimum Processing power x86 500Mhz  
Minimum RAM: 512 MB  
Minimum Storage: 700MB  
Drivers: Ubuntu 14.10

## Linutop Services

Linutop > Configuration Panel > Services Tab



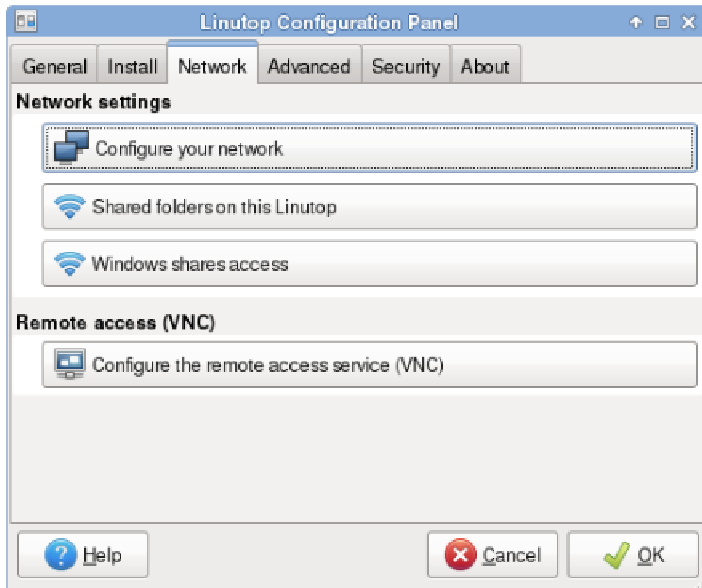
## OS Installation or Configuration

- **Installation** - Linutop OS can be downloaded and installed on a USB key, Hard Drive or internal Flash. Once installed the system is bootable.
- **Configuration** - Configuration Service will automatically set up your Linutop for a specific use. Linutop Lamp Configuration automatically installs a local LAMP server.
- **Linutop TV** - Configuration can set up the system for an automated update to [www.linutop.tv](http://www.linutop.tv) **Digital Signage Service**.

This feature requires Internet connectivity and also an Invoice number and email address.

## Linutop Network Setup

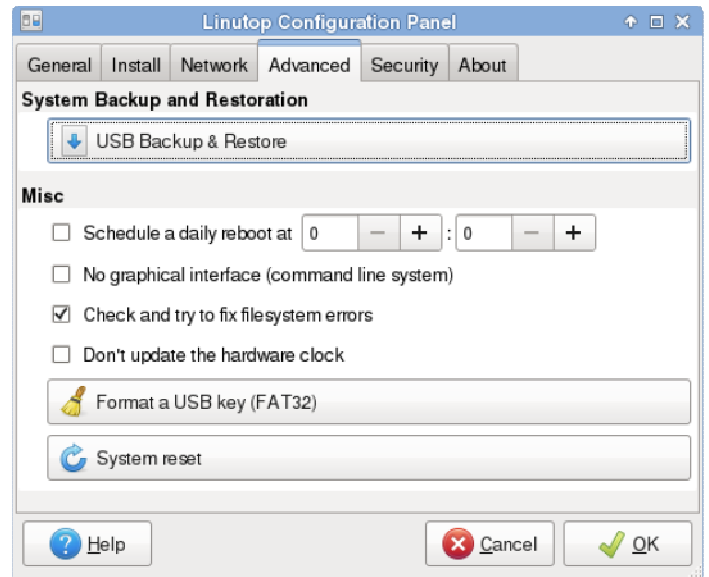
Linutop > Configuration Panel > Network Tab



- **Network Manager** – Simplifies USB wifi keys use.
- **Network Configuration** - By default the network uses DHCP to connect to a local network and/or internet and no action from your part should be needed. You can configure Static IP, Wifi usb key with WEP, WAP, Or Modem
- **Shared Folders** - Helps you to set up and share linutop data on your network.
- **Windows Shares Access** - Helps you to set up an access to a shared directory on a Windows system via the network. Enter the IP address of the Windows unit and the name of the shared directory.
- **Remote Access VNC** - Configure the remote access to your linutop Desktop. A VNC client can be used to access the linutop screen using the linutop IP address displayed in the 'About' tab.

## Advanced Configuration

Linutop > Configuration Panel > Advanced Tab

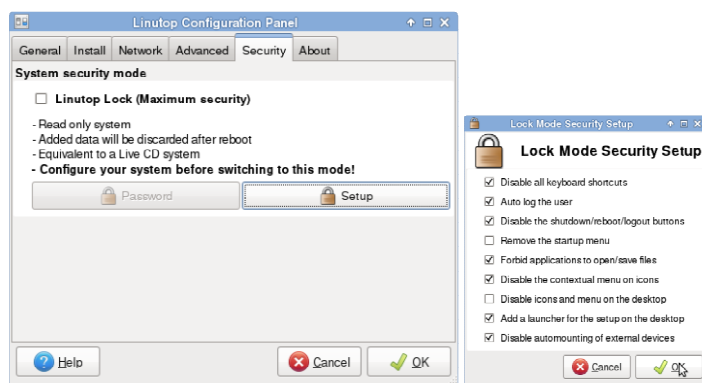


- **Backup/Restore**  
Save your configuration on a 1GB or more USB Key. The USB key is a bootable backup.  
Restore your Linutop by booting on a Linutop USB Key and restore on the internal device: /dev/sda
- **Misc:** (only for Advanced Users)
  - Daily reboot to prevent memory saturation.
  - Command line system without Xorg (no graphical interface)
  - Disk check at boot time.
  - Do not update the BIOS system time
  - Format a USB key in FAT
  - System Reset to remove all newly installed software and configs.

## Security

Linutop > Configuration Panel > Security Tab

Your Linutop can be locked with a password, and will be restored after reboot as it was at the lock point. This feature is designed to minimize maintenance costs.



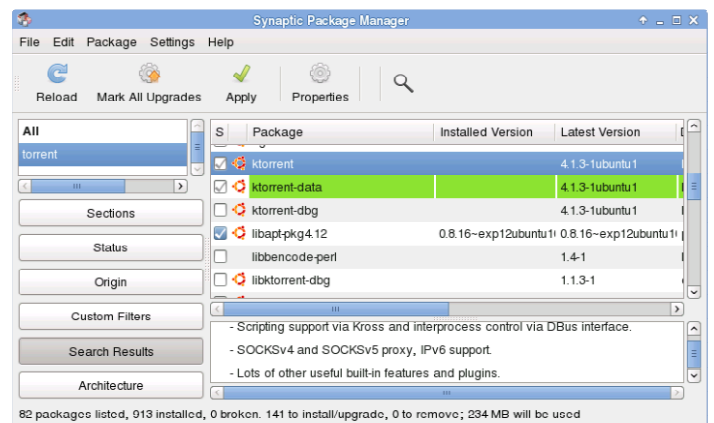
Switch to Linutop lock mode (**Maximum Security**) to set up the system in read only mode (add applications, edit the default settings and change the system configuration...).

To deactivate the lock mode:

- 1 Press Ctrl+Alt+Shift+S go
- 2 The password will be requested and go back to this menu.

## Adding Software

System > Synaptic Package Manager



You can add a full spectrum of software by using Synaptic.

## Linutop System Structure

1 partition: **ext3** containing the system and user data.

Screen saver pictures in: /cdrom/photo

User data are stored in: /home/linutop

User desktop is stored in: /home/linutop/Desktop(Linux is case sensitive)

- **Peripherals compatibility, Setup...**

- Please check on our Wiki: [www.linutop.com/wiki](http://www.linutop.com/wiki)  
- or: <http://doc.linutop.com/> online documentation

- Recommendation: **Always have a backup of your data and system.**